

FIRSTLIGHTTRAVEL



Your South Pacific Travel Specialists



GRAND PACIFIC TOURS

New Zealand **Coach Holidays** 2023 / 24



20 Seat Business Class or 32 Seat Premium Economy

Valid for Departures September 2023 - May 2024. New Zealand Dollars (NZD)



TOUR CODE SGPSI10

STYLE Signature Mid-Size Group
COACH 32 seat Premium Economy
ACCOMMODATION 4 star

STARTS Christchurch
FINISHES Christchurch

GUARANTEED DEPARTURES

2023	2024
Sep 6, 29	Jan 18
Oct 15	Feb 15
Nov 22	Mar 6
Dec 11	Apr 4
	May 8



Explore the landscapes of the spectacular South Island

10 Day Signature South Island

No hidden extras

PREPAID ATTRACTIONS

- TranzAlpine Rail Journey
- Cruise Lake Wakatipu on the TSS Earnslaw
- Lakes District Museum
- Milford Sound Cruise and Lunch
- Larnach Castle*
- City sights tour of Dunedin and Christchurch

*Guided tour.

COACH FEATURES

- 32 Premium Economy Comfort seats on a full-size coach
- 2 door access; seat back tray table; cup holder
- Restroom; daily onboard Wi-Fi allowance

EXPERIENCE

- Personalised Meet and Greet on arrival
- Return airport transfers in New Zealand
- Professional Coach Captain
- Tour Leader
- 9 nights 4 star accommodation
- 2 two night stays
- Hotel portorage
- 1 rail journey
- 2 cruises
- All sightseeing and prepaid attractions
- Extensive Optional Activities
- Signature Documentation Pack

MEALS

- 9 cooked breakfasts
- 8 sumptuous dinners including complimentary pre-dinner drink at the Welcome Dinner and 2 specialty dinners: Walter Peak Homestead, Queenstown; Farewell Dinner including pre-dinner drink, Christchurch
- 1 lunch: Milford Sound Cruise
- 1 delicious Devonshire Tea: Larnach Castle
- Enjoy GPT Hotel Wine Time (discounted drinks)

Day 1: Dinner not included for anyone arriving later than 8pm.

Itinerary and Hotels

(B) Breakfast. (L) Lunch. (D) Dinner. (SD) Specialty Dinner.

DAY 1: Arrive Christchurch (D)

On arrival into Christchurch, you will be met by a Grand Pacific Tours representative and transferred to your hotel. This evening enjoy a complimentary pre-dinner drink when you meet your Tour Leader and travelling companions for dinner.

Hotel Distinction Christchurch Hotel

DAY 2: Christchurch - Arthur's Pass - Franz Josef (B,D)

This morning board the TranzAlpine, renowned as one of the great train journeys of the world. Travel over massive viaducts, river valleys and spectacular gorges as you ascend to Arthur's Pass located in the centre of the Southern Alps. Board your coach and travel to Hokitika, famous for its Greenstone before continuing to the township of Franz Josef where time is available to experience a scenic flight (optional, weather permitting) over the spectacular glaciers.

Hotel Scenic Hotel Franz Josef Glacier (Douglas Wing)

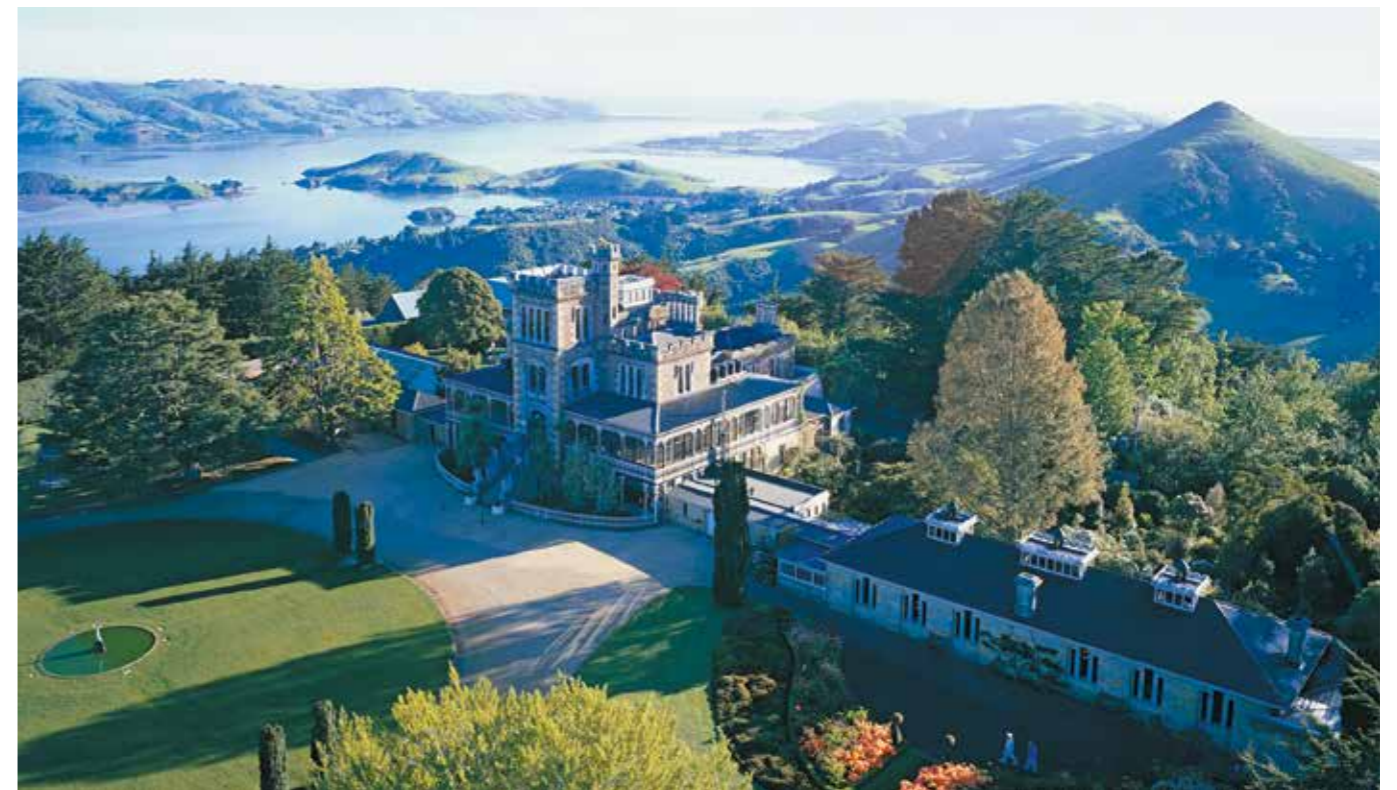
DAY 3: Franz Josef - Queenstown (B)

See the snow-capped peaks of the Southern Alps as you travel south along the West Coast to Fox Glacier. Continue via the Haast Pass, an area of stunning beauty before arriving into picturesque Queenstown, a year-round resort situated on the shores of magical Lake Wakatipu. This evening is free to dine out at one of the many fine restaurants.

Hotel Millennium Hotel Queenstown (2 nights)

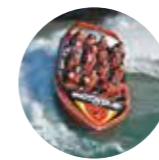
DAY 4: Queenstown (Free Day) (B,SD)

Today is a free day to explore Queenstown. Your Coach Captain and Tour Leader will assist with the many optional activities available. You may wish to enjoy the thrill of a jet boat ride or a heritage tour of the scenic Skippers Canyon. This evening board the vintage steamship TSS Earnslaw and cruise across Lake Wakatipu to Walter Peak Station. Sit back, relax and enjoy a delicious gourmet barbecue dinner featuring a menu of seasonal, fresh and locally sourced food at the Colonel's Homestead. After dinner enjoy a short farm tour then reboard the TSS Earnslaw for a sing along by the piano as you cruise back to Queenstown.



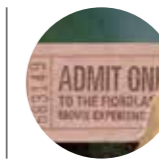
Enjoy a tour of Larnach Castle, New Zealand's only castle, built in 1871.

Optional Activities



SHOTOVER JET

Enjoy a jet boat ride in the spectacular Shotover River Canyons, carved out over the ages by a vast volume of fast flowing water. Hold on tight and take a spin in the iconic Big Red for wall to wall action from start to finish.



FIORDLAND CINEMA

No visit to Fiordland is complete without taking in the breathtaking film, 'Ata Whenua - Shadowland'. Screened in a purpose-built theatre, you will take an unforgettable journey.

DAY 5: Queenstown - Te Anau (B,D)

Enjoy a leisurely start this morning before travelling to Arrowtown, an old gold mining village where you visit the Lakes District Museum. Continue to Te Anau, the gateway to Fiordland. Today you may like to visit the Te Anau Glowworm Caves (optional).

Hotel Distinction Luxmore Hotel Lake Te Anau (Deluxe Room. 2 nights)

DAY 6: Te Anau - Milford Sound - Te Anau (B,L,D)

Depart Te Anau for a fascinating drive to Milford Sound where you board your launch for a cruise on this magnificent fiord. See the spectacular Bowen Falls and towering Mitre Peak as you enjoy lunch onboard. This afternoon return to Te Anau where some free time is available. You might like to cap off your Fiordland experience by watching the breathtaking film, Ata Whenua - Shadowland, which screens at the Fiordland Cinema (optional).

DAY 7: Te Anau - Dunedin (B,D)

Travel via Gore and Balclutha to Dunedin known as the 'Edinburgh of the South' and enjoy a city tour. Travel along the Otago Peninsula to Larnach Castle where you will hear of the tragic and scandalous history on

a guided tour. Enjoy time to wander around this Garden of International Significance followed by a delicious Devonshire Tea.

Hotel Scenic Hotel Southern Cross

DAY 8: Dunedin - Mt Cook - Twizel (B,D)

Farewell Dunedin and travel to Oamaru famous for its limestone. Follow the Waitaki River and see Lake Benmore as you continue to marvel at Mt Cook, New Zealand's highest peak. The opportunity is available to enjoy a scenic flight (optional, weather permitting) over the Southern Alps. Travel to Twizel for your overnight stay.

Hotel MacKenzie Country Hotel

DAY 9: Twizel - Christchurch (B,SD)

Continue to Lake Tekapo and view the brilliant turquoise water, the Church of the Good Shepherd and the Sheep Dog Statue before arriving in Christchurch for a city tour. This evening enjoy a pre-dinner drink and reminisce on memories shared with your new friends at the farewell dinner.

Hotel Distinction Christchurch Hotel

DAY 10: Depart Christchurch (B)

Time to say goodbye. You will be transferred to the airport for your flight home after a memorable New Zealand holiday.



"We would recommend this trip to anyone. GPT organised this holiday well and the coach was very comfortable."

- J. B. & B. B. - Past Travellers