

FIRSTLIGHTTRAVEL



Your South Pacific Travel Specialists

New Zealand
Coach Holidays
2022 / 23



3 Ways to Travel. 4 Styles of Touring

Valid for Departures September 2022 - May 2023



TOUR CODE CGPN8

STYLE Classic Affordable Group
COACH 48 seat Classic
ACCOMMODATION 3.5 star

STARTS Wellington
FINISHES Auckland

GUARANTEED DEPARTURES

2022	2023
Sep 20	Jan 30
Oct 15, 26	Feb 12, 22
Nov 11, 21	Mar 5, 10, 21
	Apr 4, 11, 18
	May 10



Explore the North Island's iconic attractions and geothermal hotspots

8 Day Affordable North Island

No hidden extras

PREPAID ATTRACTIONS

- Te Papa, NZ's National Museum
- Skyline Rotorua Gondola and Luge Ride
- Agrodome
- Thermal mud pools and geysers*
- Traditional Māori Hāngi and Concert
- Hole in the Rock Dolphin Cruise
- Kauri Museum
- City sights tour of Wellington and Auckland

*Guided tour.

COACH FEATURES

- 48 seats on a Classic touring coach
- 2 door access; overhead travel bag storage
- Restroom; panoramic viewing

EXPERIENCE

- Return airfares from your homeport
- Personalised Meet and Greet on arrival
- Return airport transfers in New Zealand
- Professional Coach Captain
- Tour Leader
- 7 nights 3.5 star accommodation
- 3 two night stays
- Hotel portage
- 1 cruise
- All sightseeing and prepaid attractions
- Extensive Optional Tours Programme
- Classic Documentation Pack

MEALS

- 7 cooked breakfasts including a specialty breakfast: Stratosfare Restaurant, Rotorua
- 5 sumptuous dinners including 1 specialty dinner: Māori Hāngi and Concert, Rotorua
- Enjoy GPT Hotel Wine Time (discounted drinks)

Day 1: Dinner not included for anyone arriving later than 8pm.

Itinerary and Hotels

(B) Breakfast. (L) Lunch. (D) Dinner. (SD) Specialty Dinner.

DAY 1: Arrive Wellington (D)

On arrival into Wellington, you will be met by a Grand Pacific Tours representative and transferred to your hotel. This evening meet your Tour Leader and travelling companions.

Hotel Ibis Wellington (2 nights)

DAY 2: Wellington (B)

A highlight this morning will be time to explore Gallipoli: A Scale of War exhibition at Te Papa, New Zealand's National Museum. Cutting edge technology brings these stories to life through the eyes of New Zealanders who found themselves in extraordinary circumstances. Reboard your coach for an extensive city tour which showcases the history and culture on show. Enjoy free time this afternoon and this evening is also free to choose your own dining arrangements.

DAY 3: Wellington - Taupo - Rotorua (B,D)

Depart Wellington and view the snow-capped peaks of Mt Ruapehu and Mt Tongariro as you travel to Lake Taupo. Visit the spectacular Huka Falls then travel along the Thermal Explorer Highway to the geothermal wonderland and cultural capital of New Zealand, Rotorua.

Hotel Distinction Rotorua (Superior Room. 2 nights)

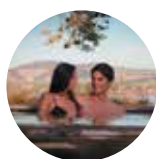
DAY 4: Rotorua (B,SD)

Today begins with a gondola ride and breakfast at Skyline Rotorua. There is also time for a thrilling luge ride! Next stop is Agrodome for an action-packed hour of farming entertainment and education that is unlike anything you've seen before. Visit Te Puia to see the boiling mud pools and awesome geysers that Rotorua is famous for. Enjoy some free time this afternoon. This evening experience an entertaining Māori Hāngi and Concert.



Cruise through the beautiful Bay of Islands to Piercy Island, or as it's popularly known, the Hole in the Rock.

Optional Activities



POLYNESIAN SPA

Whilst in Rotorua why not take the opportunity to relax in hot mineral spring pools at the Polynesian Spa, New Zealand's leading international spa. Choose from 27 hot pools and enjoy views over Lake Rotorua.



RUSSELL MINI TOUR

There is no better way to explore the historic sights of Russell than on a one-hour tour. Visit area's not easily accessible on foot. A highlight is the 360 degree views from Flagstaff Hill.

DAY 5: Rotorua - Auckland - Bay of Islands (B,D)

This morning depart Rotorua and travel north via Auckland. Continue via Whangarei to Paihia, situated in the heart of the beautiful Bay of Islands. Enjoy an introduction to the Bay of Islands, location of the signing of the treaty between the Māori tribes and the British.

Hotel Kingsgate Hotel Autolodge (2 nights)

DAY 6: Bay of Islands (B)

Today you will explore the scenic beauty of the Bay of Islands aboard a luxury catamaran. Cruise to Cape Brett and the famous Hole in the Rock, keep an eye out for dolphins and other marine life. Return to Paihia for a free afternoon where a range of optional activities are available, or you may choose to relax and enjoy the pleasant atmosphere of the waterfront. This evening is also free, you may like to enjoy a relaxing dinner cruise (optional).

DAY 7: Bay of Islands - Auckland (B,D)

Depart the Bay of Islands this morning and travel via Whangarei and Dargaville to Matakoho. Enjoy a visit and informative talk at the Kauri Museum before continuing to Auckland for a city sights tour. This evening enjoy a final dinner with your newfound friends.

Hotel Rydges Auckland

DAY 8: Depart Auckland (B)

Time to say goodbye. You will be transferred to the airport for your flight home after a memorable New Zealand holiday.



Enjoy spectacular views of Rotorua on a gondola ride up to Skyline Rotorua.